

BUILDER & DEVELOPERS:



Sumangalambuildmart Pvt. Ltd.

CORPORATE OFFICE:

SUMANGALAMBUILD MART PVT. LTD.

Plot No. 85-B, Shrinathpuram

Near BSNL Circle, Kota (Raj.)-304010

email : info@sumangalambuildmart.com

web : www.sumangalambuildmart.com, shubhsaveravillas.com

SITE OFFICE:

Shubh Savera - The Villas , Near Raipura and DCM Circle.,kota (Raj.)

FOR INQUIRY : +91 9116632812

ARCHITECT:



PRIME ART
ARCHITECTS (P) LTD

CREATING DIMENSIONS

Mob. : +91 98281 37800

Web. : www.primeartarchitects.com

E-mail : primeartarchitects@gmail.com



SHUBH SAVERA
— THE VILLAS —




SHUBH SAVERIA
— THE VILLAS —

*Live
in tune with life*



ENTRY GATE



GRAND ENTRANCE.... GRANDER WELCOME

The magnificent and grand entrance welcome you to the world of fine living. Where living is an everyday celebration filled with moments of joy tucked in every nook and cranny, Shubh Saveria is a symbol of elite living that reflects the beauty of high life





SHUBH SAVERA
— THE VILLAS —

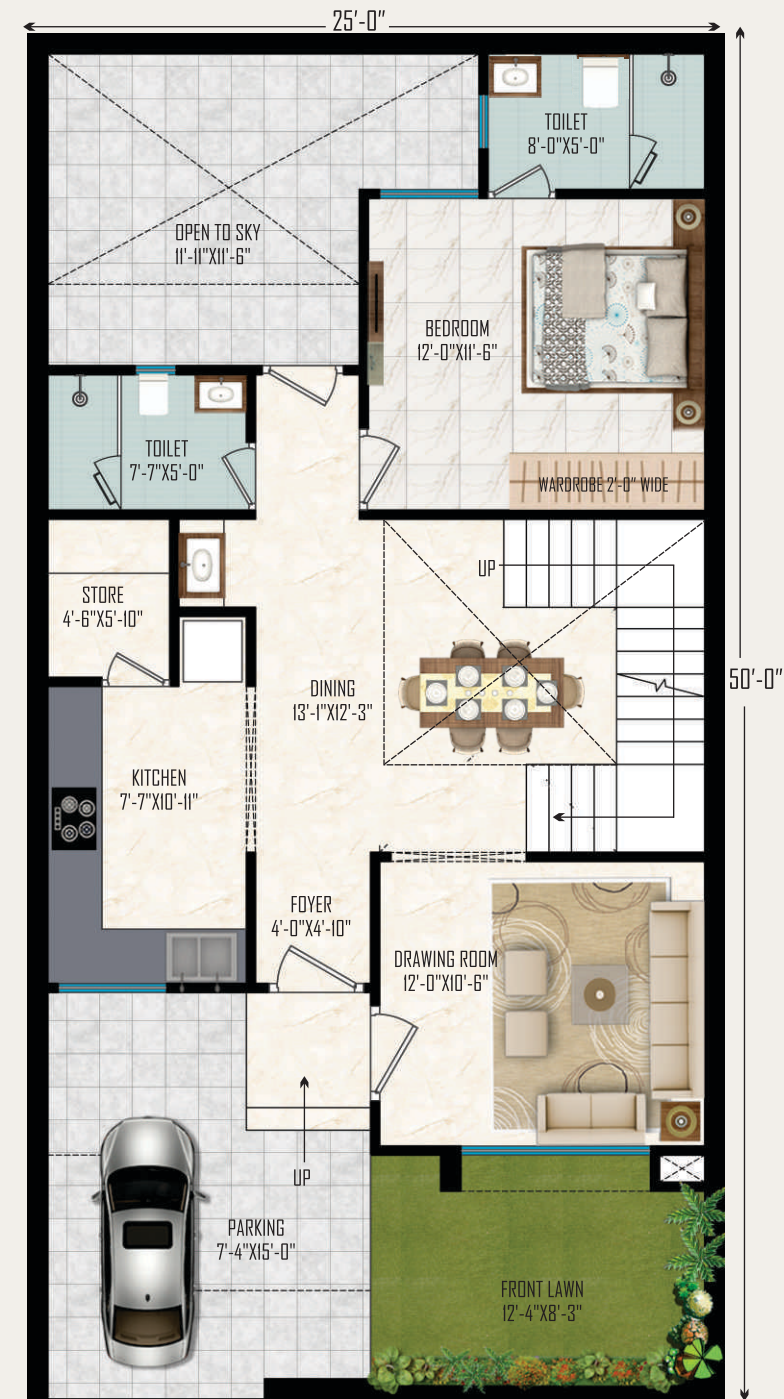
A PERFECT GETAWAY TO LIVE PEACE FULLY

Away from all the disturbances of hectic daily life, experience the peace of life embracing the very beautiful homes.

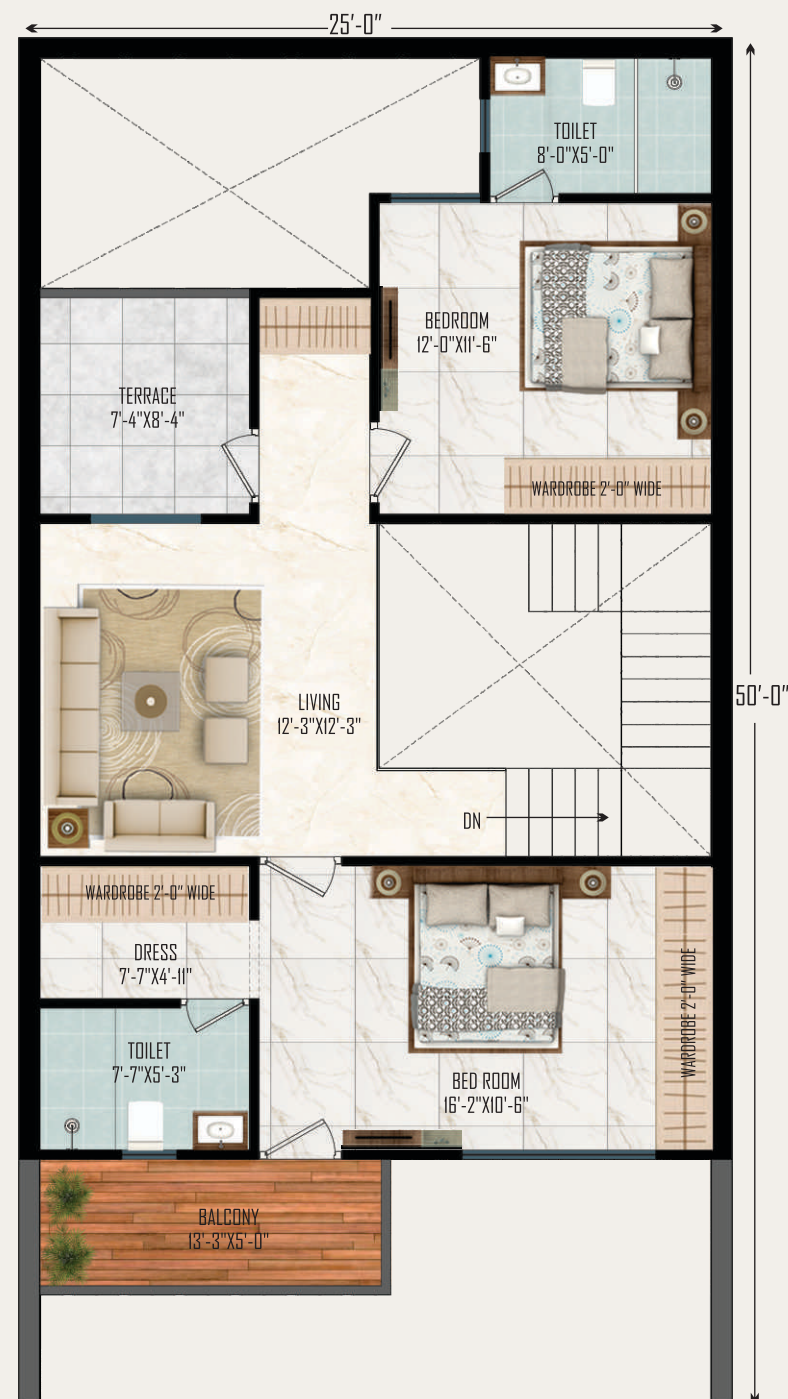


25' X 50' DUPLEX

DUPLEX 25' X 50'



GROUND FLOOR



FIRST FLOOR

Size = 25' X 50' Duplex
 Plot Area = 1250 Sq. Ft.
 Built -up = 2163.28 Sq. Ft.



GROUND FLOOR

FIRST FLOOR



**SHUBH SAVERIA**
— THE VILLAS —

A PERFECT GETAWAY
TO LIVE BEYOND
BOUNDARIES

Having immense open spaces is the utmost luxury in modern times. SHUBH SAVERIA Homes gifts you this luxury so that you live and enjoy each moment here doing things you like

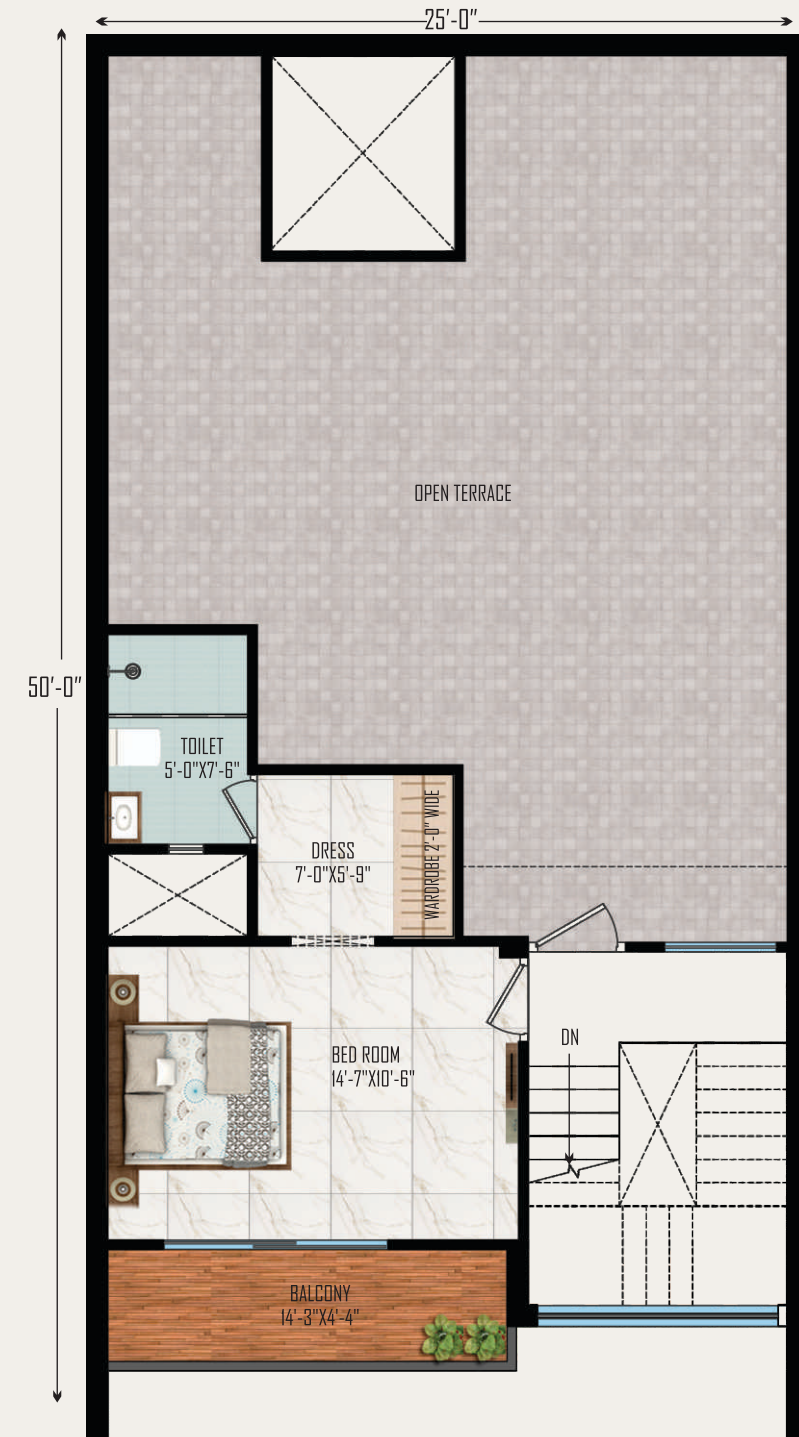


25' X 50' SIMPLEX

SIMPLEX 25' X 50'



GROUND FLOOR



FIRST FLOOR

Size = 25' X 50' Simplex
 Plot Area = 1250 Sq. Ft.
 Built -up = 1775.82 Sq. Ft.



GROUND FLOOR

FIRST FLOOR




SHUBH SAVERA
— THE VILLAS —

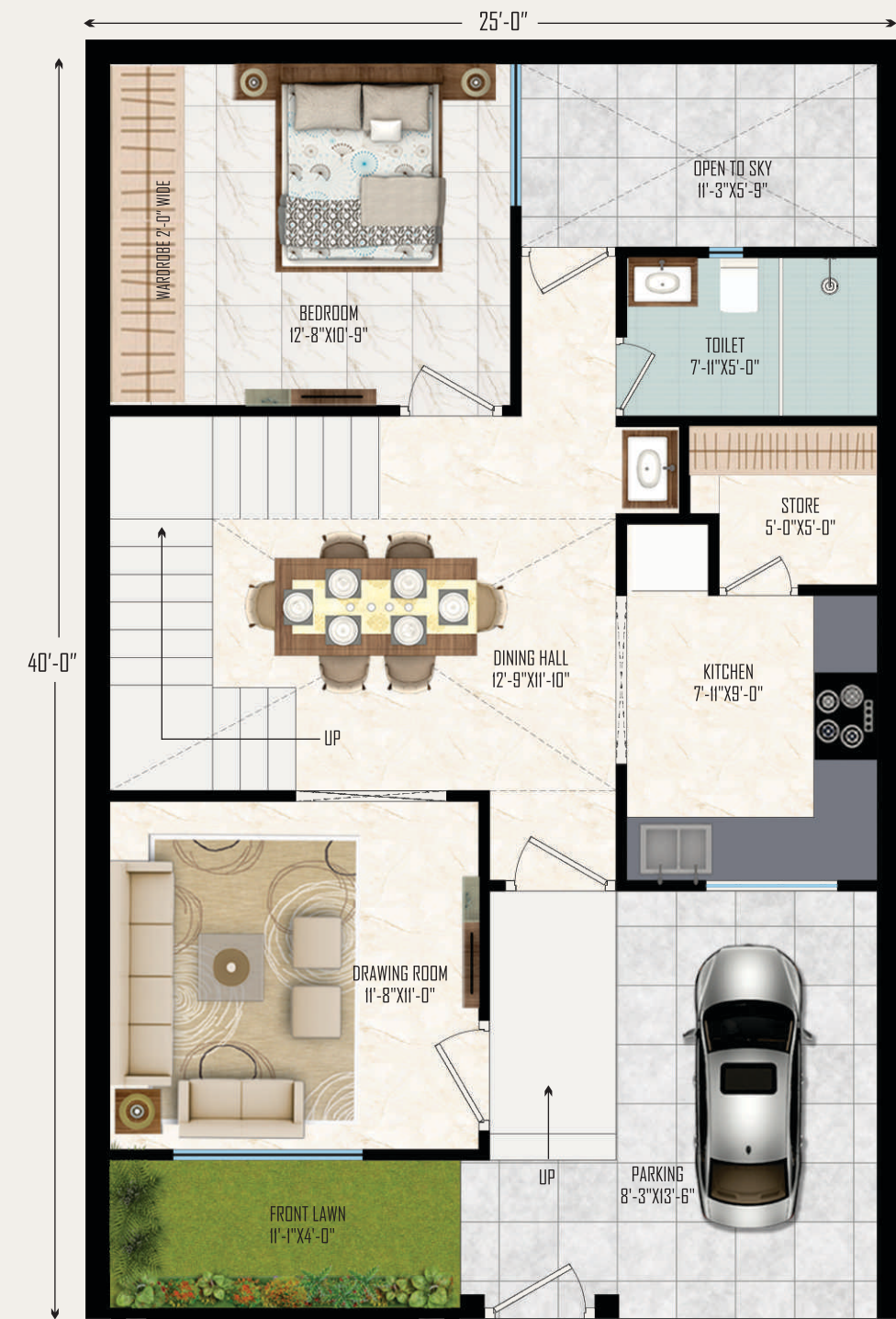
A PERFECT GETAWAY TO REINVIGORATE BOND OF LOVE

There are ample excuses to let you get romantic with your life and life partner.
The arithmetically designed elegant Exterior is just one of them.

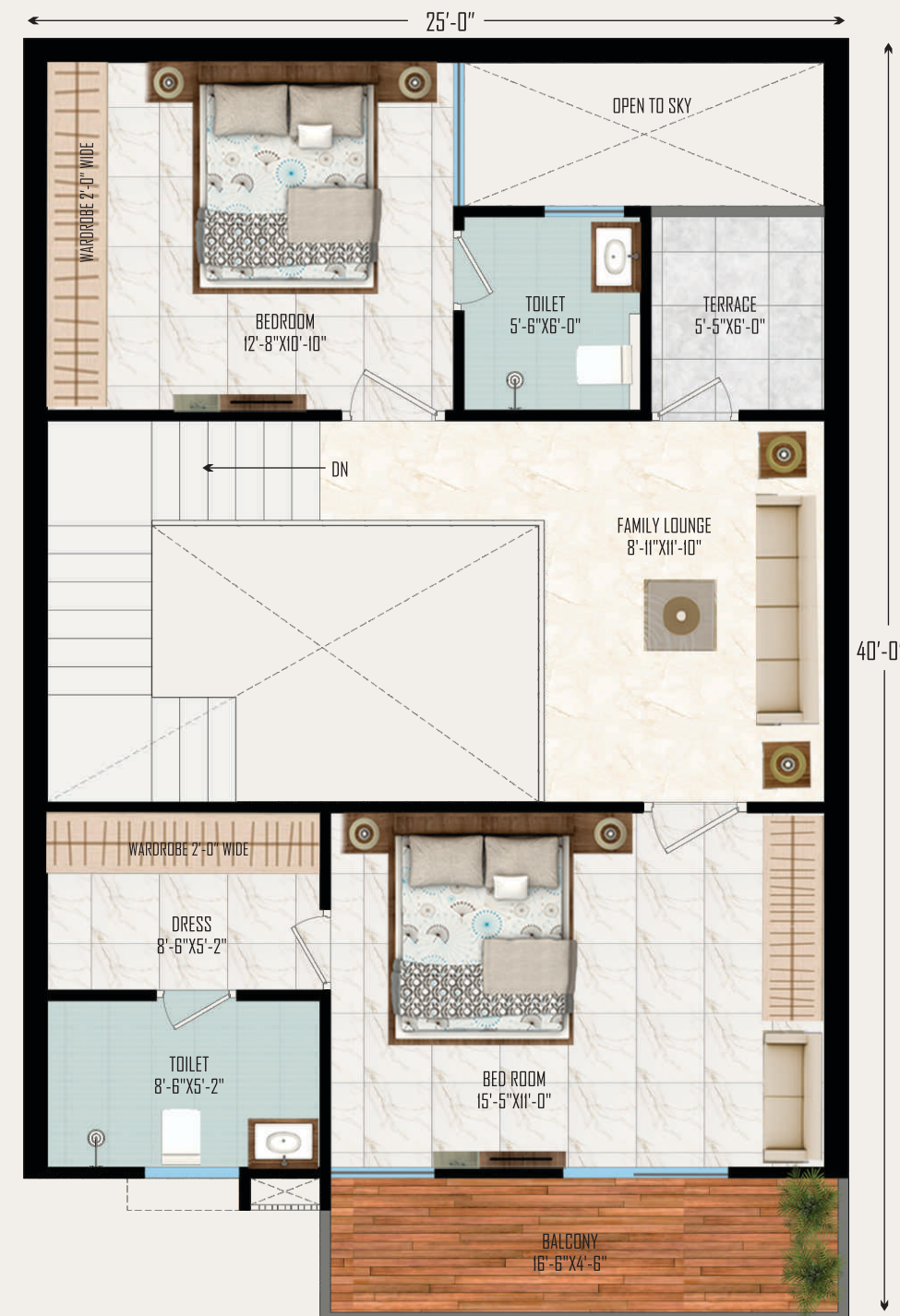


25' X 40' DUPLEX

DUPLEX 25' X 40'



GROUND FLOOR



FIRST FLOOR

Size = 25' X 40' Duplex
 Plot Area = 1000 Sq. Ft.
 Built -up = 1865.03 Sq. Ft.



GROUND FLOOR

FIRST FLOOR



SHUBH SAVERA
— THE VILLAS —

GREAT BEAUTY..... GREATER ARCHITECTURE

Shubb Savera has spectacular architecture featuring the finest 3bhk Villas, all complete with state-of-the-art amenities and premium finishes. It is where art meets architecture and creates a marvel.



25' X 40' SIMPLEX

SIMPLEX 25' X 40'



GROUND FLOOR



FIRST FLOOR

Size = 25' X 40' Simplex
 Plot Area = 1000 Sq. Ft.
 Built -up = 1382.05 Sq. Ft.



GROUND FLOOR

FIRST FLOOR



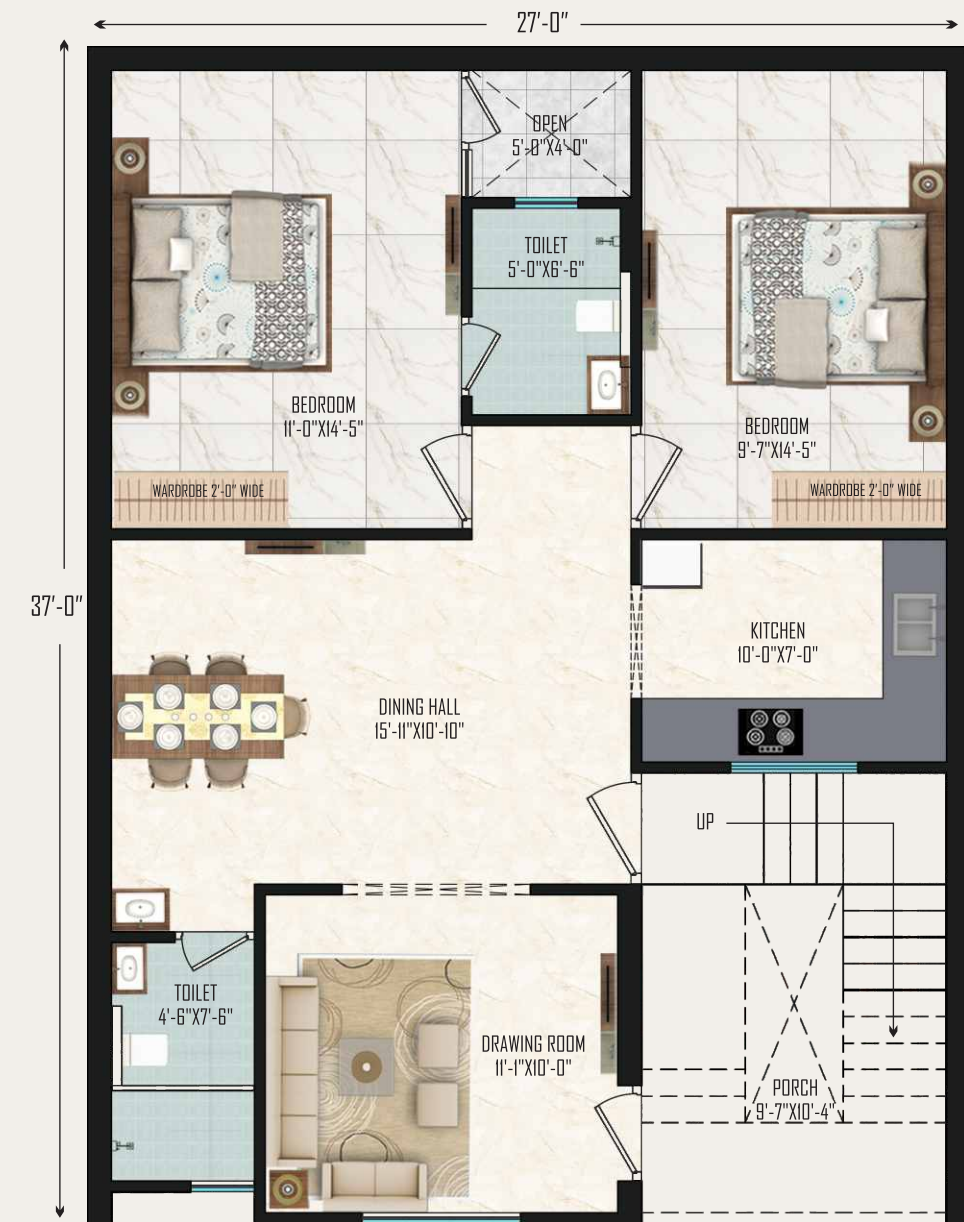
SUPERB AMBIENCE.... SUPERIOR LIFESTYLE

Space of boundless beauty and serenity. Space to create joyful moments
space to cherish memories space to live, laugh and play Shubh Savera
combines all the comforts, conveniences and luxuries of modern day
living.



27' X 37' SIMPLEX

SIMPLEX 27' X 37'



GROUND FLOOR



FIRST FLOOR

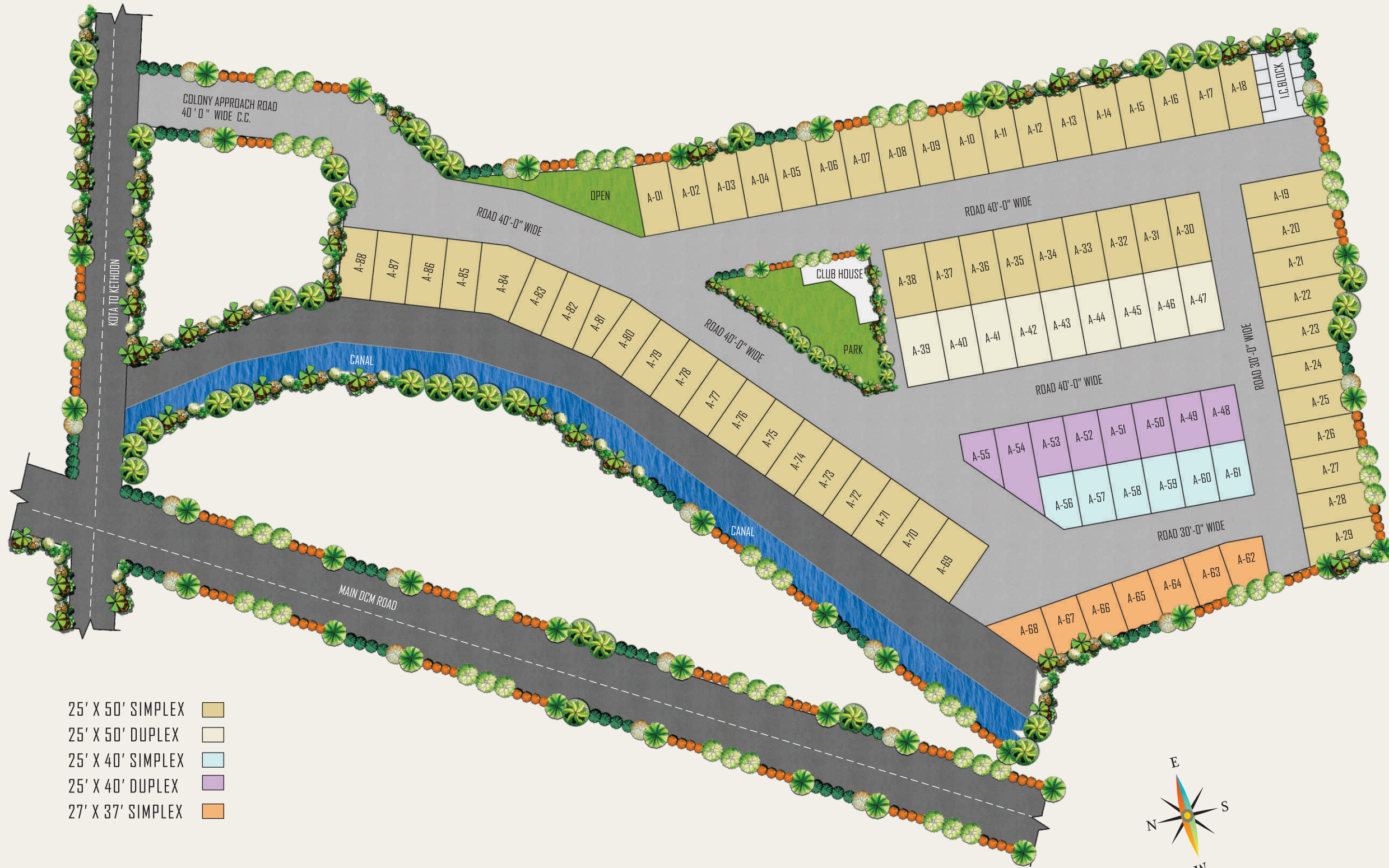
Size = 27' X 37' Simplex
 Plot Area = 1000 Sq. Ft.
 Built -up = 1419.10 Sq. Ft.



GROUND FLOOR

FIRST FLOOR

SITE PLAN





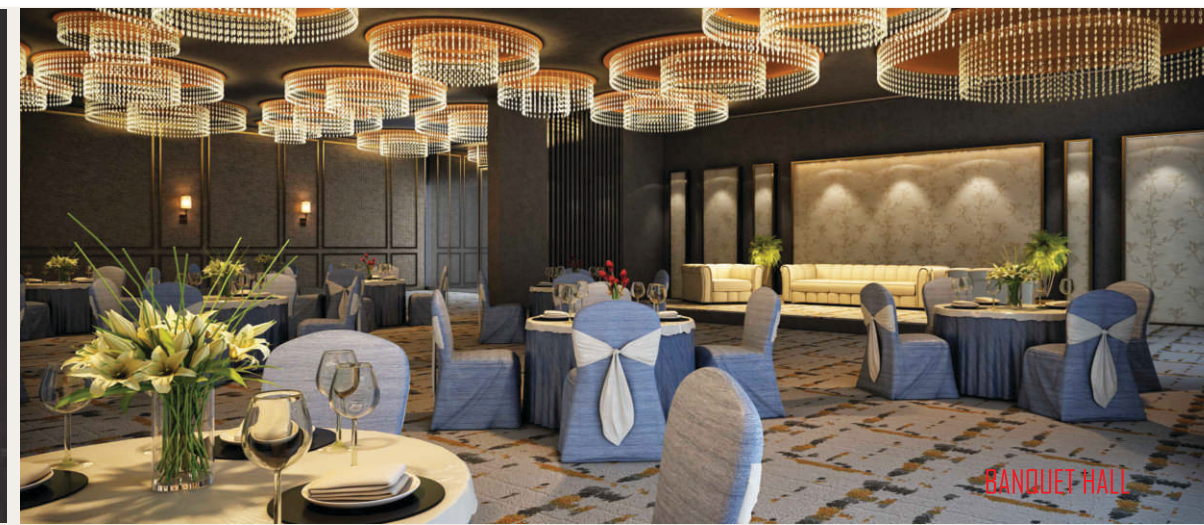
CLUB HOUSE

AMENITIES

- Smart Society Solutions
- Entrance Gate With 24 x 7 Security
- Automatic Boombarrier System with RFID System
- CCTV Camera
- Temple
- Street Light
- Club House Amenities :
 - Gym
 - Multipurpose Hall
 - Game Room/Ladies Kitty party Room
 - Meeting Hall / Admin Office
- Badminton Court / Basket ball Court / Skating Area
- Green Park With Boundary Wall
- 40 ft. and 30 ft. wide C.C. Roads
- Water Supply With Pipeline From own G.W.R.



Play Area



BANQUET HALL



Out Door Games



Yoga



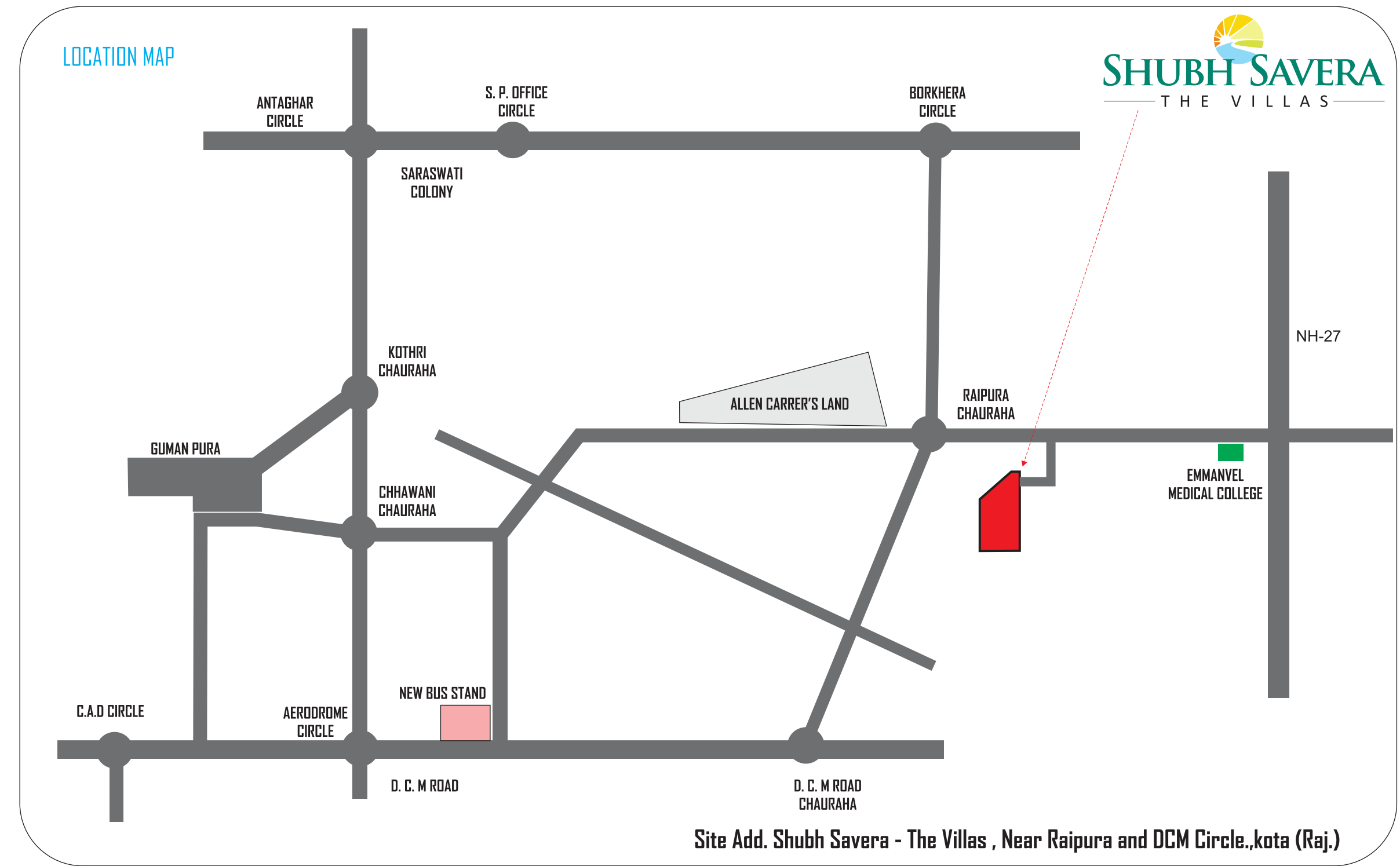
Admin Office



Gym

SPECIFICATION

VILLAS FEATURES	WALLS	FLOOR	CEILING	DOORS	WINDOWS/ GLAZING	OTHERS	SWITCHES
LIVING ROOM/ DINING/LOBBY/ FAMILY ROOM/ FOYER	ACRYLIC EMULSION	VITRIFIED TILES	ACRYLIC EMULSION	INTERNAL DOOR: SEASONED HARDWOOD FRAMES WITH DESIGNER FLUSH DOORS	WOODEN/ UPVC/ ALUMINIUM	PROVISION FOR AIR CONDITIONING	MODULAR SWITCHES
MASTER BEDROOM	ACRYLIC EMULSION	LAMINATED WOODEN FLOORING	ACRYLIC EMULSION	INTERNAL DOOR: SEASONED HARDWOOD FRAMES WITH DESIGNER FLUSH DOORS	WOODEN/ UPVC/ ALUMINIUM	PROVISION FOR AIR CONDITIONING	MODULAR SWITCHES
OTHER BEDROOM(S)	ACRYLIC EMULSION	VITRIFIED TILES	ACRYLIC EMULSION	INTERNAL DOOR: SEASONED HARDWOOD FRAMES WITH DESIGNER FLUSH DOORS	WOODEN/ UPVC/ ALUMINIUM	PROVISION FOR AIR CONDITIONING	MODULAR SWITCHES
KITCHEN	COMBINATION OF TILES & OIL BOUND DISTEMPER	VITRIFIED TILES	OIL BOUND DISTEMPER	INTERNAL DOOR: SEASONED HARDWOOD FRAMES WITH DESIGNER FLUSH DOORS	WOODEN/ UPVC/ ALUMINIUM	SEMI-MODULAR KITCHEN, GRANITE COUNTER TOP WITH 2' HT.DADO, STAINLESS STEEL SINK WITH CP FITTING	MODULAR SWITCHES
BALCONIES/ TERRACES	WEATHER PROOF PAINT	TILES	DRY DISTEMPER	EXTERNAL DOOR: SEASONED HARDWOOD FRAMES WITH DESIGNER FLUSH DOORS	WOODEN/ UPVC/ ALUMINIUM	N.A	MODULAR SWITCHES
MASTER TOILET	COMBINATION OF CERAMIC TILES & OIL BOUND DISTEMPER	ANTI SKID CERAMIC TILES	OIL BOUND DISTEMPER	INTERNAL DOOR: SEASONED HARDWOOD FRAMES WITH DESIGNER FLUSH DOORS	WOODEN/ UPVC/ ALUMINIUM	CP FITTINGS OF JAGUAR / GROHE / KOHLER OR EQUIVALENT	MODULAR SWITCHES
OTHER TOILETS	COMBINATION OF CERAMIC TILES & OIL BOUND DISTEMPER	ANTI SKID TILES	OIL BOUND DISTEMPER	INTERNAL DOOR: SEASONED HARDWOOD FRAMES WITH DESIGNER FLUSH DOORS	WOODEN/ UPVC/ ALUMINIUM	CP FITTINGS OF JAGUAR / GROHE / KOHLER OR EQUIVALENT	MODULAR SWITCHES
OTHER AMENITIES	PROVISION OF INVERTOR, WORLD CLASS CLUB HOUSE WITH ALL MODERN FACILITIES, CEMENT CONCRETE ROAD						



Location Advantage

- Located at 200 mtr from Raipura Circle
- Very Near to Inter State Bus Terminal approx 4.5 km.
- Walking Distance from Shri Ram Nagar, DCM Colony 1 km approx.
- Only at a distance of Approx 5.5 km from Kota's heart Aerodrome Circle.
- 2 km from Four-lane Bypass Baran Road
- 1.5 km from Smritivan (UIT Proposed and ongoing construction of big Garden Inspired by CV
- Garden and Ganesh Udyan)